



2024 annual report to the Community

Riverbanks College B-12 and Riverbanks College B-12 Preschool

Riverbanks College B-12 number: 1913

Riverbanks College B-12 Preschool number: 5813

Partnership: Peachey



School principal:

Joseph Priolo

Date of endorsement:

09/02/2025



Context Statement

Riverbanks College B-12 caters for students from R-12. At the time of this report, the enrolment in 2024 is 1108. Riverbanks College B-12 is classified as Category 4 on the Department for Education Index of Educational Disadvantage. At the time of this report, the school population includes 13% Aboriginal students, 19% students with disabilities, 3% students with English as an additional language or dialect (EALD) funded background, 3% children/young people in care. Further information about the school is available on the school's website (including its context statement), as well as the My School website.

Information about Riverbanks College B-12 Preschool is available on the centres website, as well as the Australian Childrens Education and Care Quality Authority (ACECQA) website.

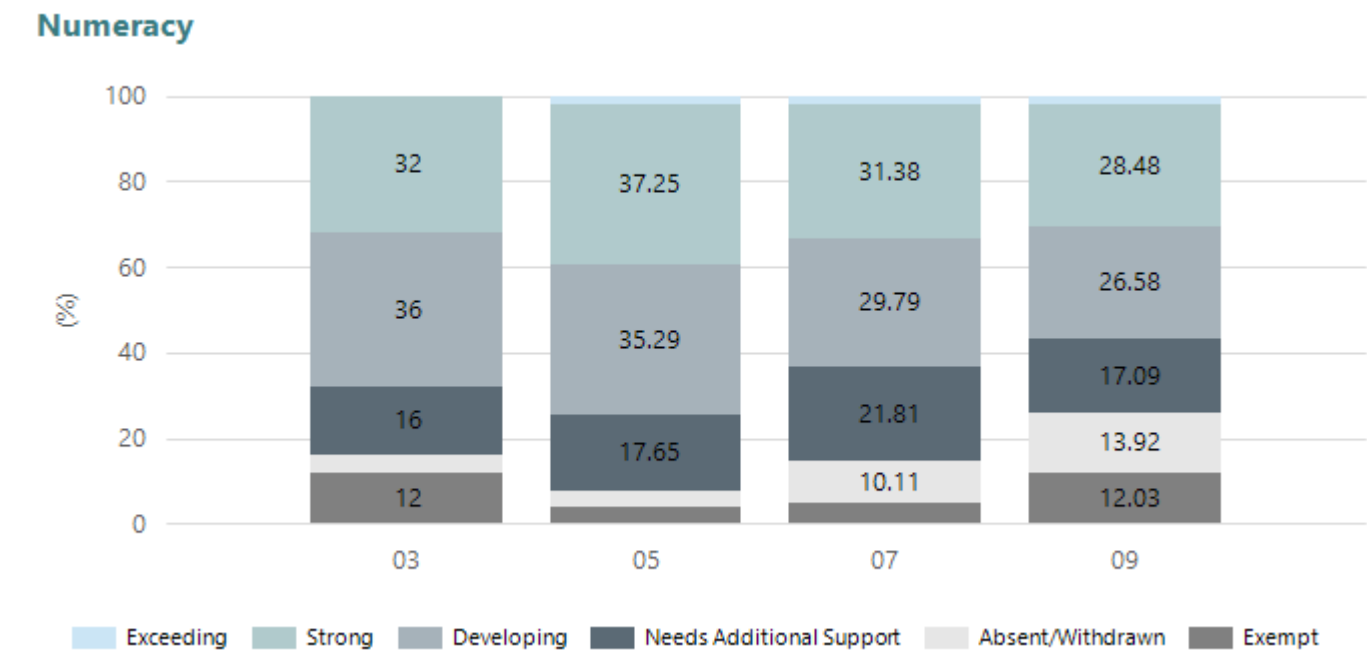
Data Source: Department for Education data holdings from Mid census captured in AUGUST 2024.

Governing Council Report

Performance Summary

NAPLAN Proficiency

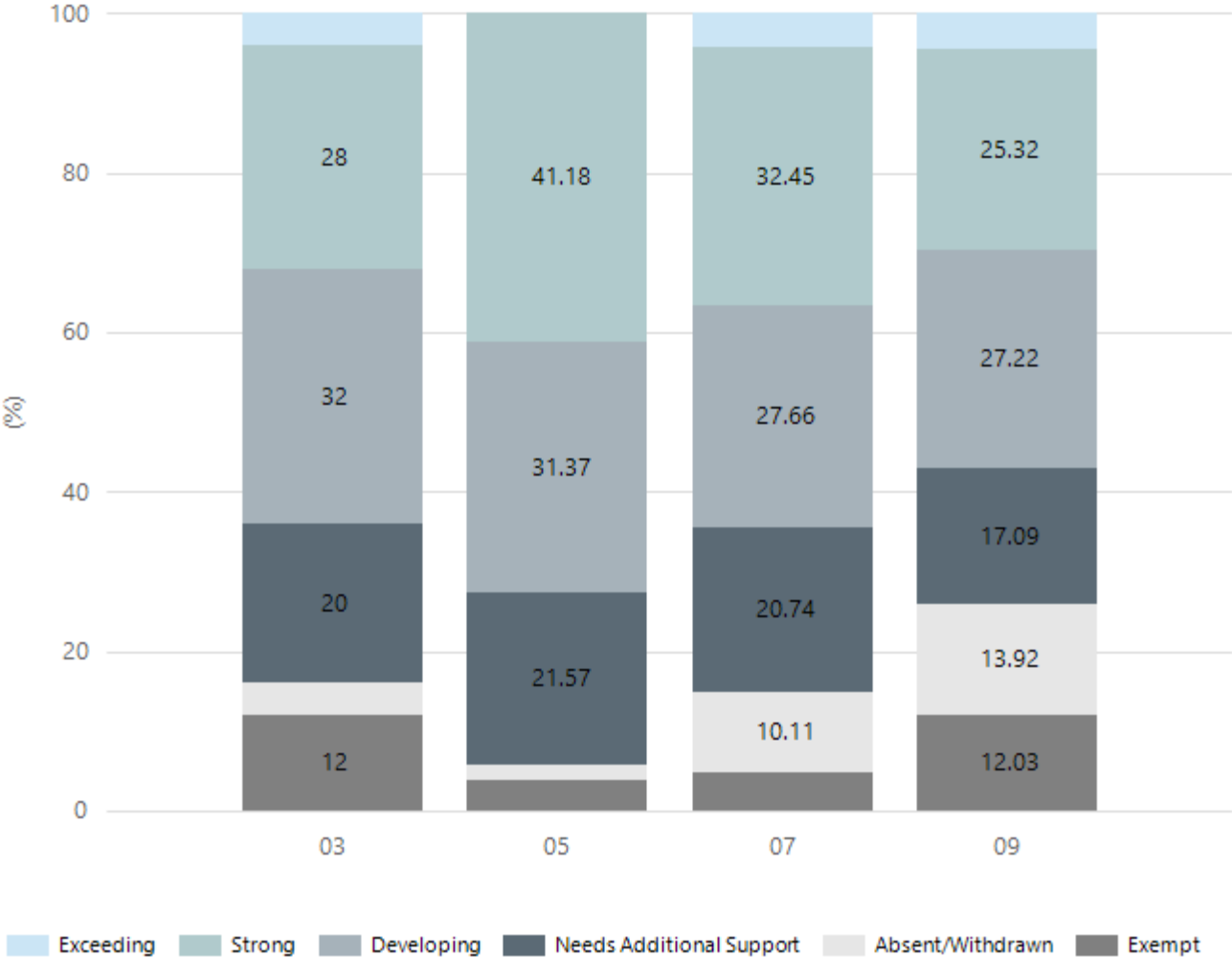
In 2023 the Australian Curriculum, Assessment and Reporting Authority (ACARA) - a Commonwealth Independent statutory authority - announced changes to NAPLAN performance reporting. The new approach replaces the previous numerical NAPLAN bands and the national minimum standard.



Year Level	03	05	07	09
Exceeding		1	4	3
Strong	16	19	59	45
Developing	18	18	56	42
Needs Additional Support	8	9	41	27
Absent/Withdrawn	2	2	19	22
Exempt	6	2	9	19
Total	50	51	188	158

Data Source: Department for Education Assessment Data Holdings, 2024. If there are less than 6 students who sat NAPLAN in a school, no information will be shown. If a year level has less than 6 students, that year level will not be shown in NAPLAN results.

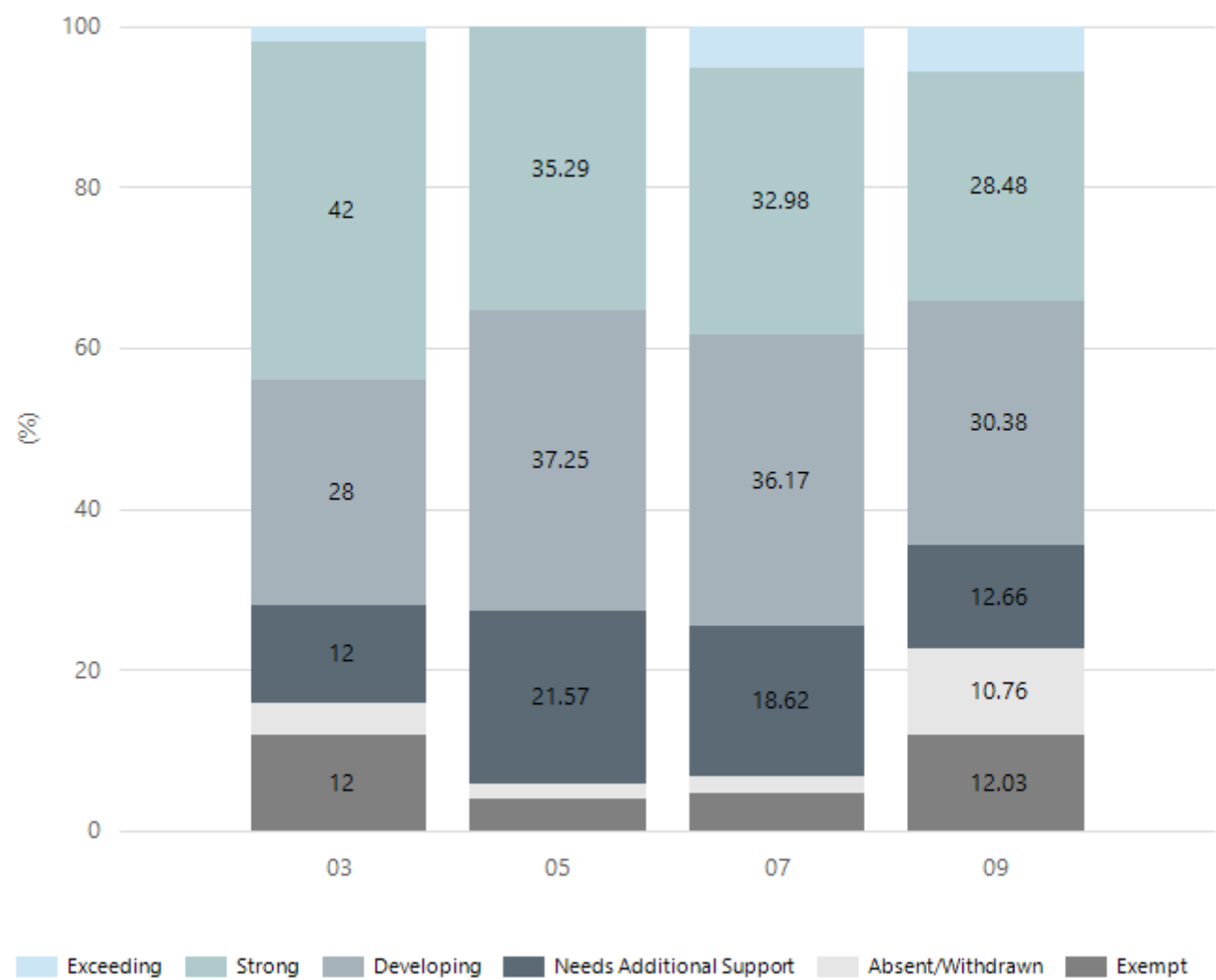
Reading



Year Level	03	05	07	09
Exceeding	2		8	7
Strong	14	21	61	40
Developing	16	16	52	43
Needs Additional Support	10	11	39	27
Absent/Withdrawn	2	1	19	22
Exempt	6	2	9	19
Total	50	51	188	158

Data Source: Department for Education Assessment Data Holdings, 2024. If there are less than 6 students who sat NAPLAN in a school, no information will be shown. If a year level has less than 6 students, that year level will not be shown in NAPLAN results.

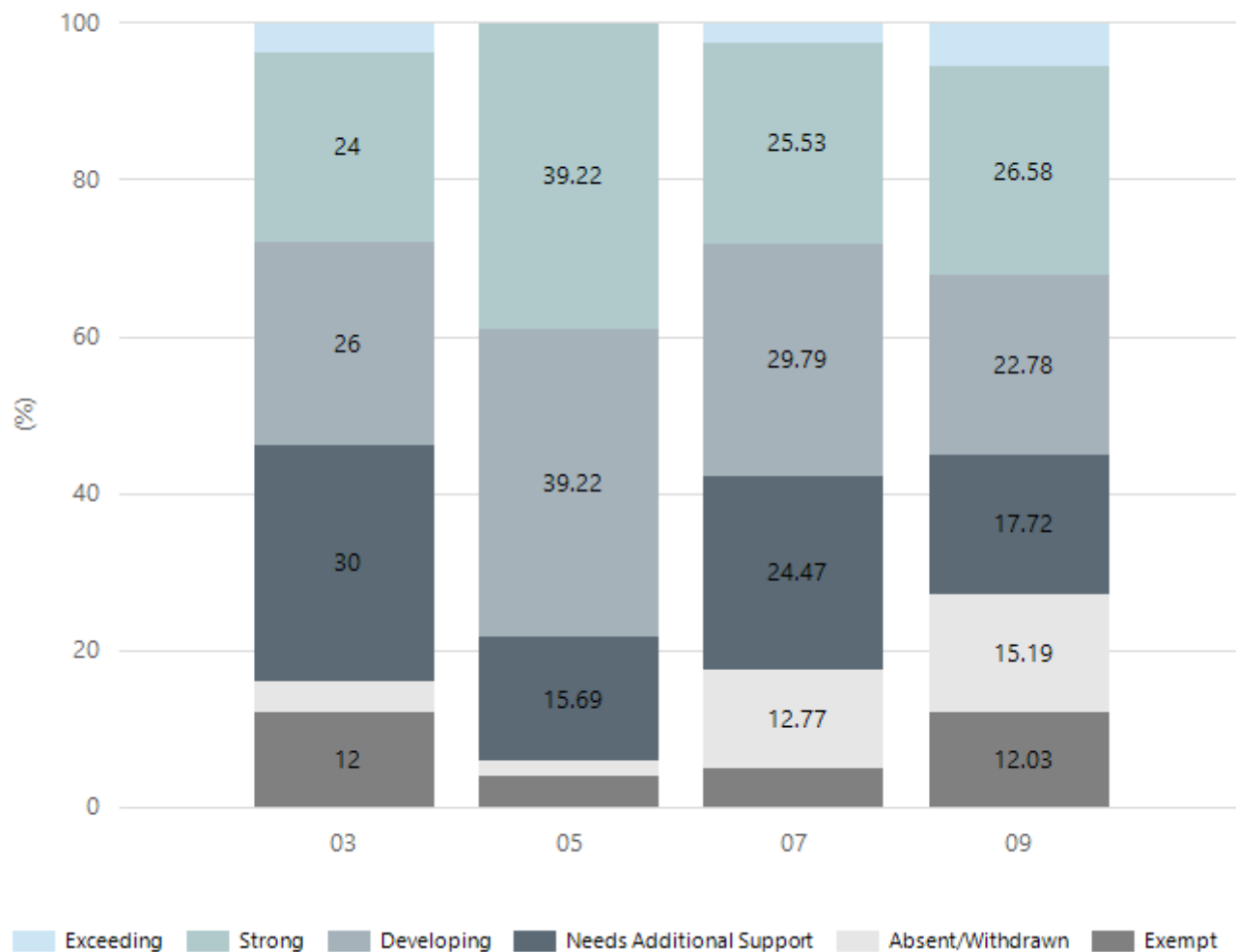
Writing



Year Level	03	05	07	09
Exceeding	1		10	9
Strong	21	18	62	45
Developing	14	19	68	48
Needs Additional Support	6	11	35	20
Absent/Withdrawn	2	1	4	17
Exempt	6	2	9	19
Total	50	51	188	158

Data Source: Department for Education Assessment Data Holdings, 2024. If there are less than 6 students who sat NAPLAN in a school, no information will be shown. If a year level has less than 6 students, that year level will not be shown in NAPLAN results.

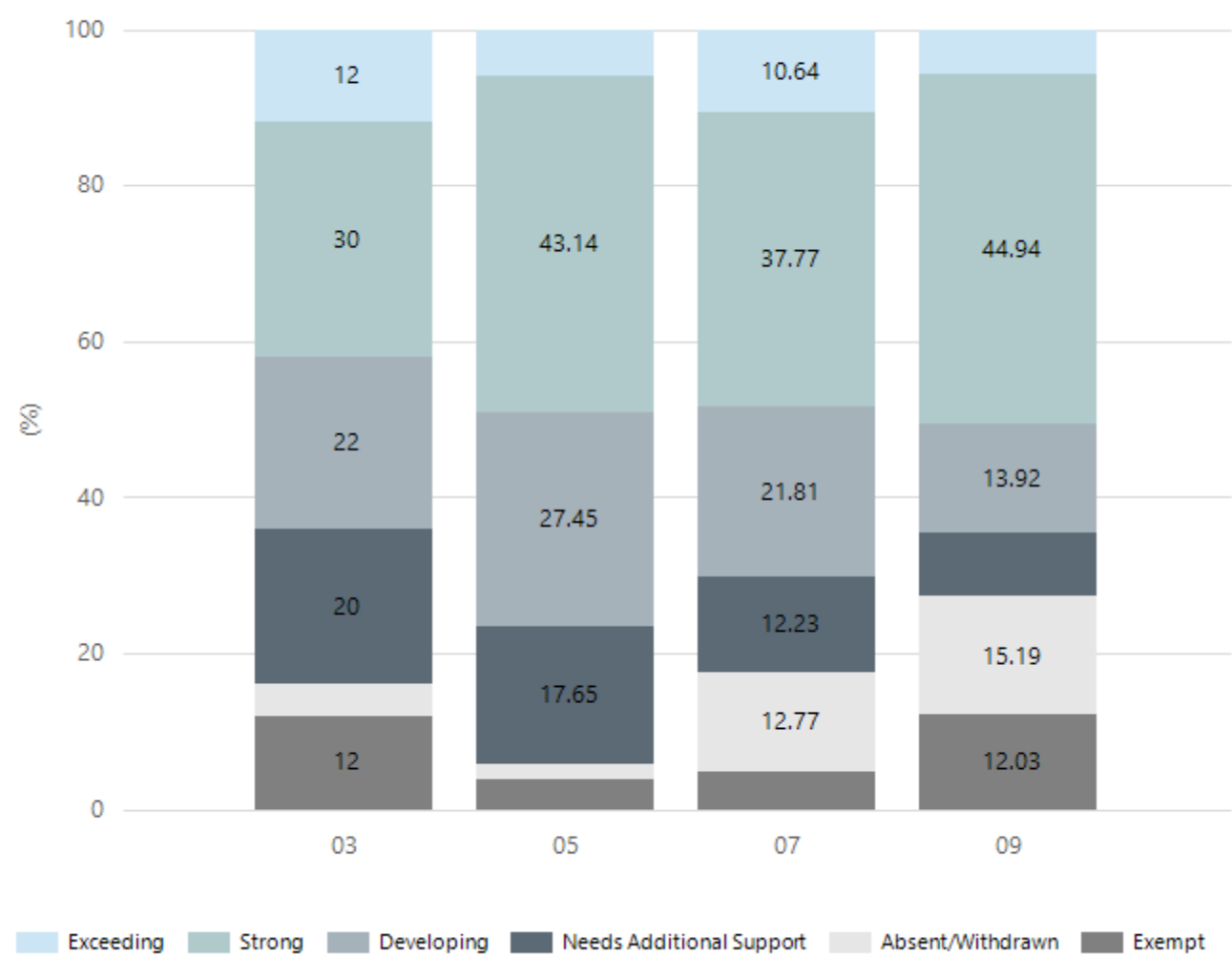
Grammar



Year Level	03	05	07	09
Exceeding	2		5	9
Strong	12	20	48	42
Developing	13	20	56	36
Needs Additional Support	15	8	46	28
Absent/Withdrawn	2	1	24	24
Exempt	6	2	9	19
Total	50	51	188	158

Data Source: Department for Education Assessment Data Holdings, 2024. If there are less than 6 students who sat NAPLAN in a school, no information will be shown. If a year level has less than 6 students, that year level will not be shown in NAPLAN results.

Spelling

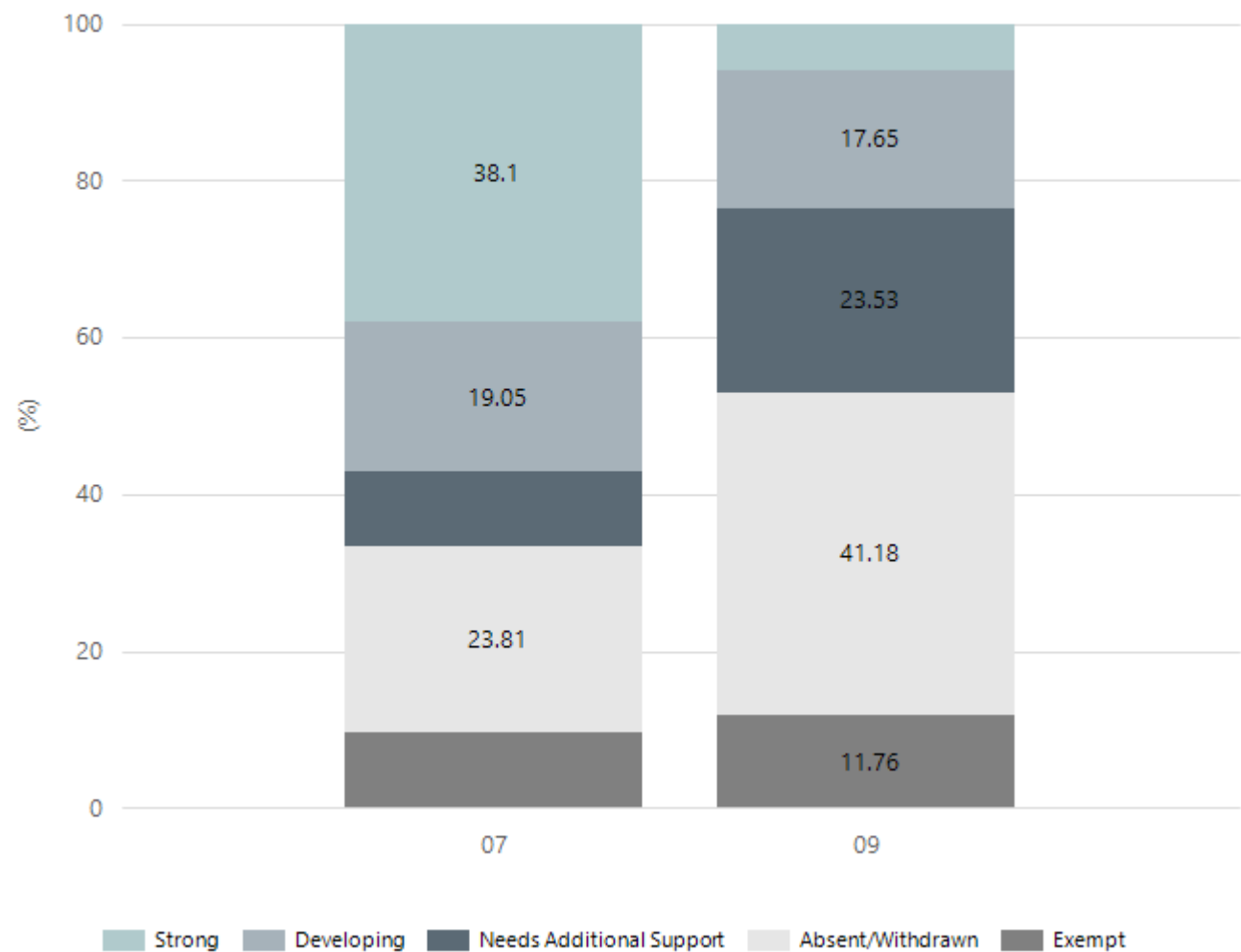


Year Level	03	05	07	09
Exceeding	6	3	20	9
Strong	15	22	71	71
Developing	11	14	41	22
Needs Additional Support	10	9	23	13
Absent/Withdrawn	2	1	24	24
Exempt	6	2	9	19
Total	50	51	188	158

Data Source: Department for Education Assessment Data Holdings, 2024. If there are less than 6 students who sat NAPLAN in a school, no information will be shown. If a year level has less than 6 students, that year level will not be shown in NAPLAN results.

NAPLAN Proficiency - Aboriginal Learners

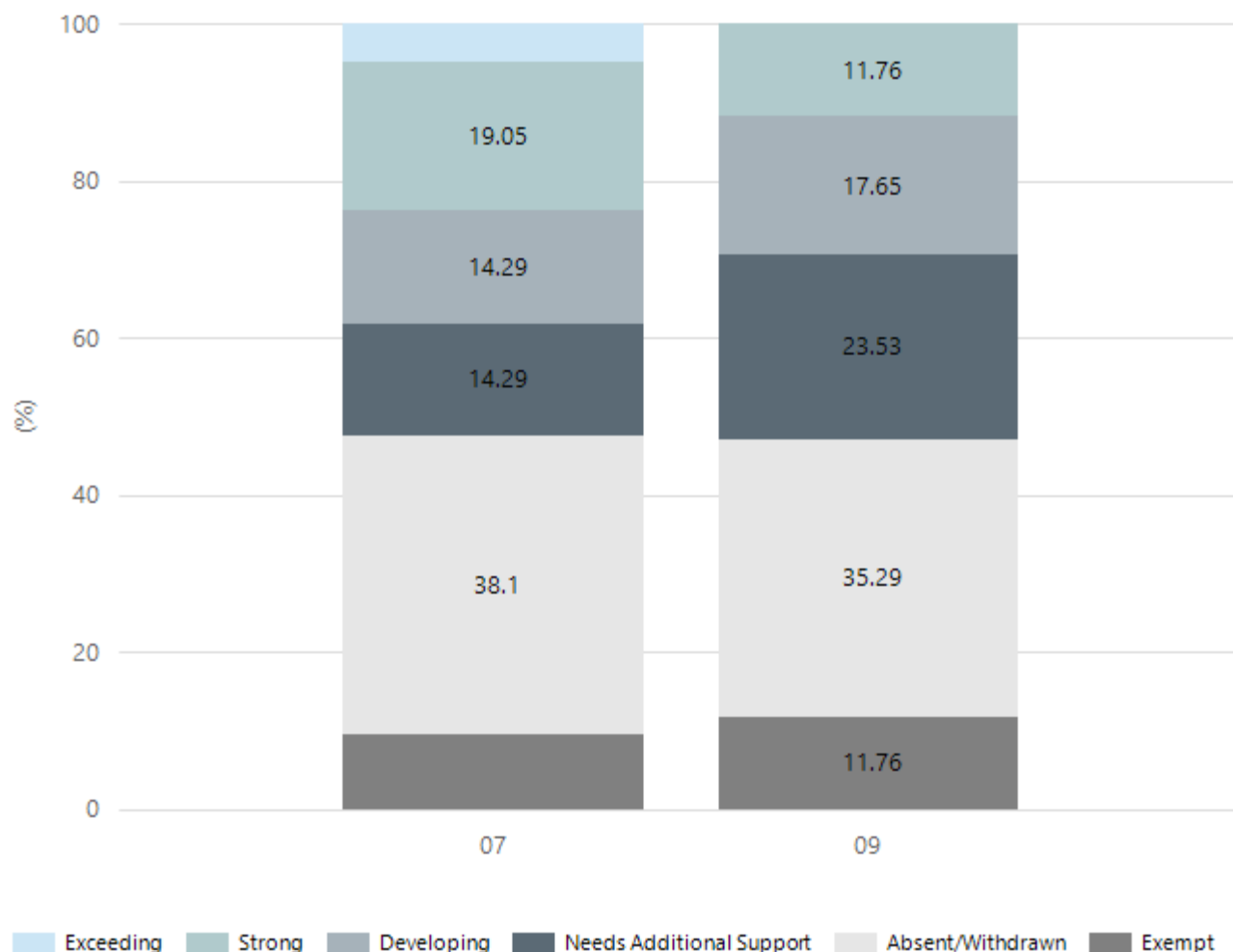
Numeracy



Year Level	07	09
Strong	8	1
Developing	4	3
Needs Additional Support	2	4
Absent/Withdrawn	5	7
Exempt	2	2
Total	21	17

Data Source: Department for Education Assessment Data Holdings, 2024. If there are less than 6 students who sat NAPLAN in a school, no information will be shown. If a year level has less than 6 students, that year level will not be shown in NAPLAN results. Only data for Aboriginal learners is displayed.

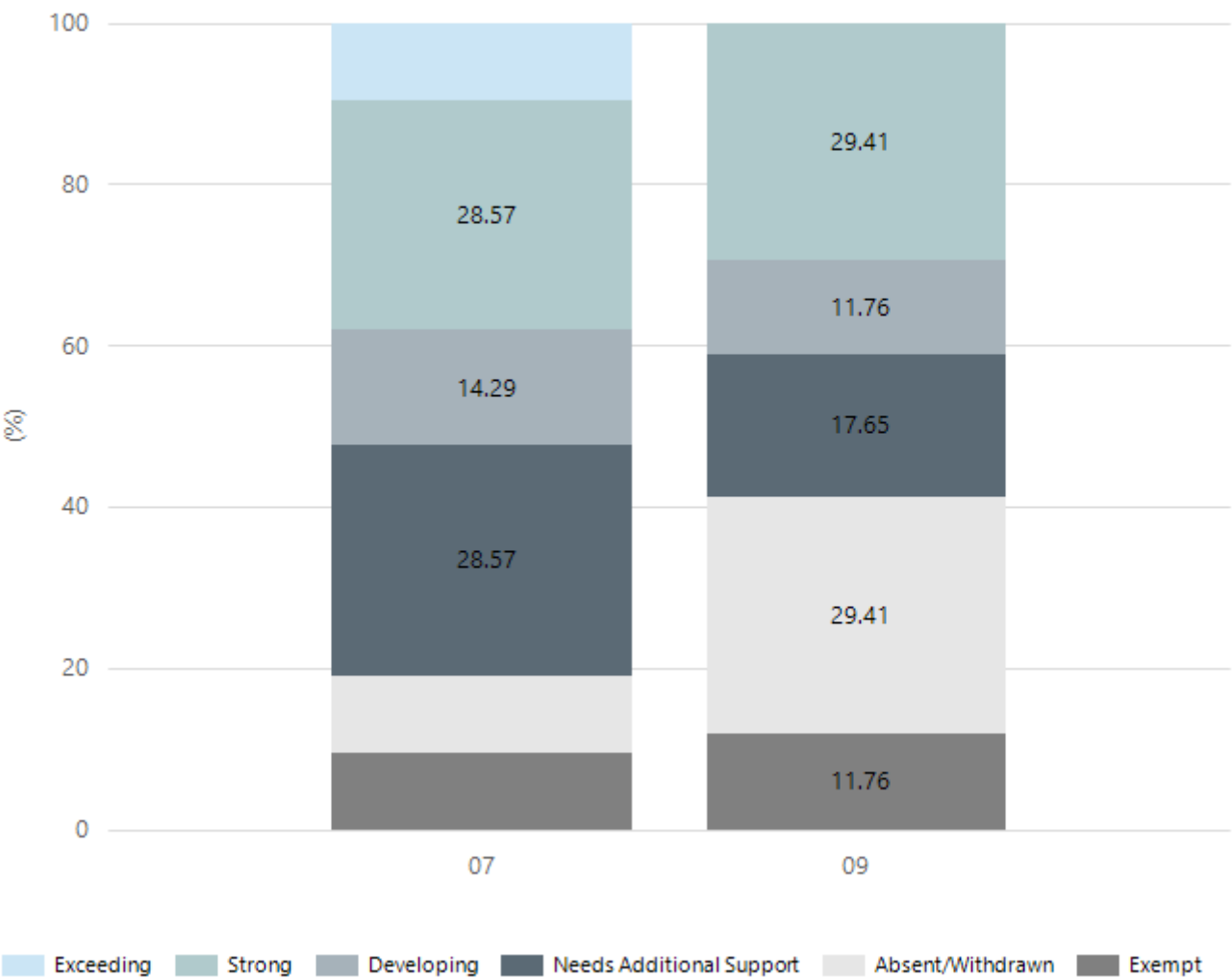
Reading



Year Level	07	09
Exceeding	1	
Strong	4	2
Developing	3	3
Needs Additional Support	3	4
Absent/Withdrawn	8	6
Exempt	2	2
Total	21	17

Data Source: Department for Education Assessment Data Holdings, 2024. If there are less than 6 students who sat NAPLAN in a school, no information will be shown. If a year level has less than 6 students, that year level will not be shown in NAPLAN results. Only data for Aboriginal learners is displayed.

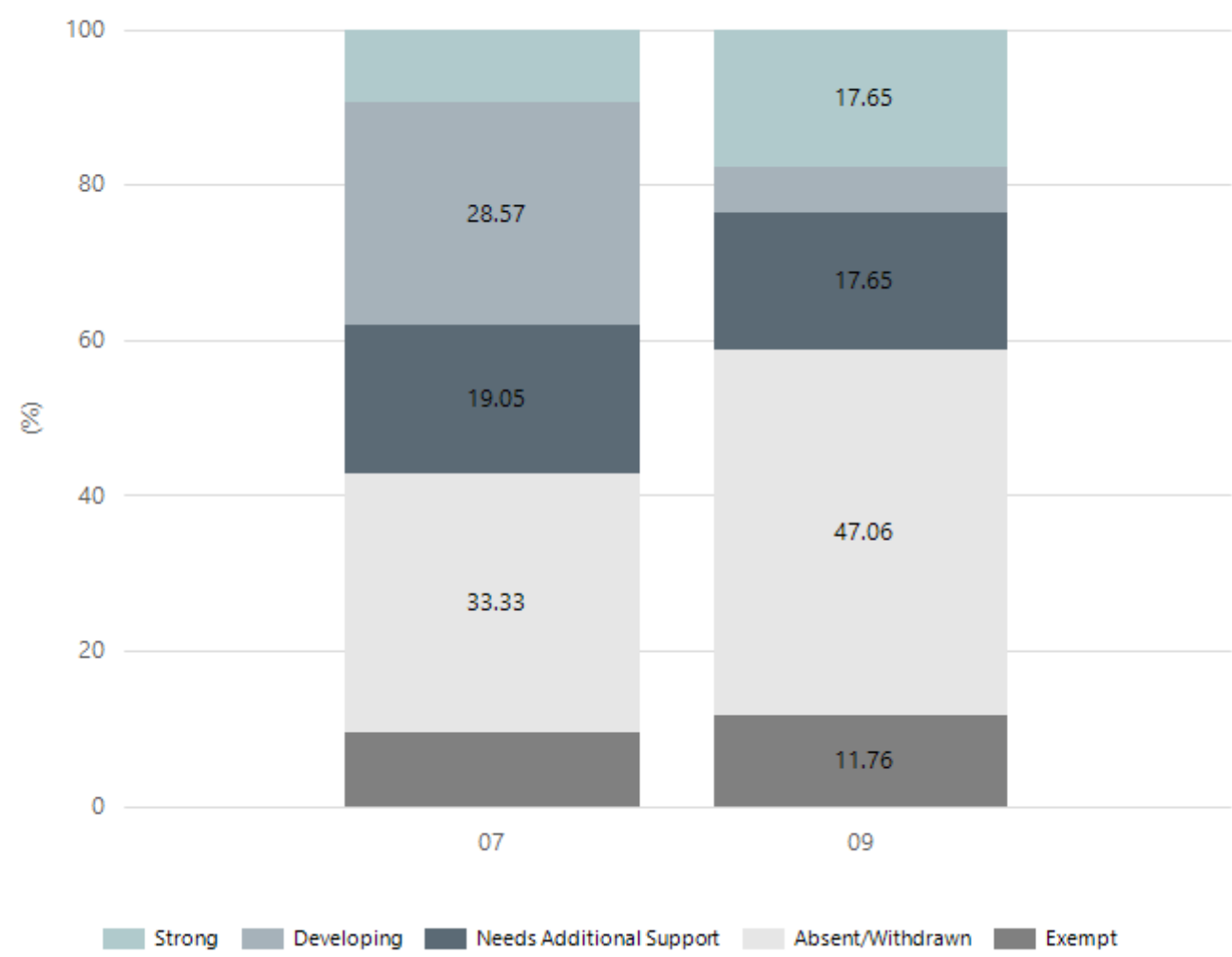
Writing



Year Level	07	09
Exceeding	2	
Strong	6	5
Developing	3	2
Needs Additional Support	6	3
Absent/Withdrawn	2	5
Exempt	2	2
Total	21	17

Data Source: Department for Education Assessment Data Holdings, 2024. If there are less than 6 students who sat NAPLAN in a school, no information will be shown. If a year level has less than 6 students, that year level will not be shown in NAPLAN results. Only data for Aboriginal learners is displayed.

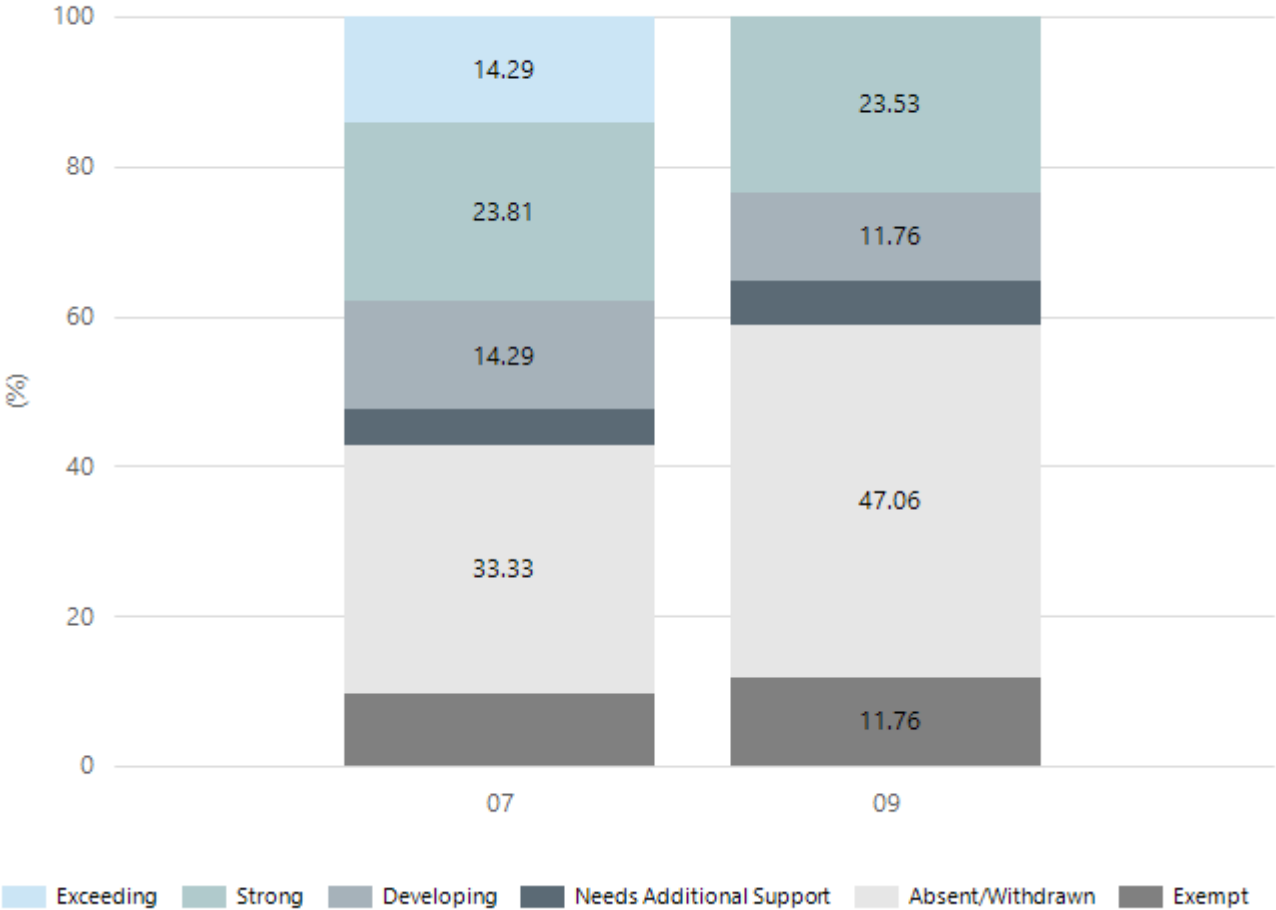
Grammar



Year Level	07	09
Strong	2	3
Developing	6	1
Needs Additional Support	4	3
Absent/Withdrawn	7	8
Exempt	2	2
Total	21	17

Data Source: Department for Education Assessment Data Holdings, 2024. If there are less than 6 students who sat NAPLAN in a school, no information will be shown. If a year level has less than 6 students, that year level will not be shown in NAPLAN results. Only data for Aboriginal learners is displayed.

Spelling



Year Level	07	09
Exceeding	3	
Strong	5	4
Developing	3	2
Needs Additional Support	1	1
Absent/Withdrawn	7	8
Exempt	2	2
Total	21	17

Data Source: Department for Education Assessment Data Holdings, 2024. If there are less than 6 students who sat NAPLAN in a school, no information will be shown. If a year level has less than 6 students, that year level will not be shown in NAPLAN results. Only data for Aboriginal learners is displayed.

Year 12 Students undertaking Vocational or Trade Training (VET)

	2022	2023	2024
Percentage of Year 12 students undertaking Vocational Training or Trade Training			
Percentage of Year 12 students attaining a Year 12 certificate or equivalent VET qualification			

Data Source: School supplied data

Preschool Attendance

	Term 1	Term 2	Term 3	Term 4
2022 centre	89.7%	83.3%	84%	85.9%
2023 centre	91.8%	83.8%	82.1%	86.2%
2024 centre	92.3%		78.4%	

Based on attendances recorded in the two-week reference period each term. Data for eligible enrolments as described in the department's Enrolment policy. Attendance rates may differ to previous reporting with the transfer from calculations based on deemed attendance to actual attendance using booked hours divided by attended hours. Data Source: Department for Education Attendance Data, Semester 1 Report 2024. A blank cell indicates there we no students enrolled.

School Attendance

Year Level	2022	2023	2024
Reception	90.4%	89.5%	92.6%
Year 01	89.9%	89.4%	92.6%
Year 02	87.8%	90.0%	91.1%
Year 03	86.7%	91.0%	90.5%
Year 04	88.5%	91.7%	89.2%
Year 05	88.6%	90.3%	88.4%
Year 06	92.3%	88.7%	87.7%
Year 07	84.8%	86.1%	86.8%
Year 08	83.2%	85.4%	83.5%
Year 09		82.0%	84.0%
Year 10			82.5%
Year 11			
Primary Other	86.9%	85.0%	89.8%
Secondary Other	81.4%	82.1%	83.4%
Total	85.9%	86.5%	86.4%

Data Source: Department for Education Attendance Data, Semester 1 Report 2024. A blank cell indicates there we no students enrolled. 'Primary Other' includes students enrolled in specialised education options. 'Secondary Other' includes students who have already spent a year at Year 12 and elected to undertake further study at Year 12.

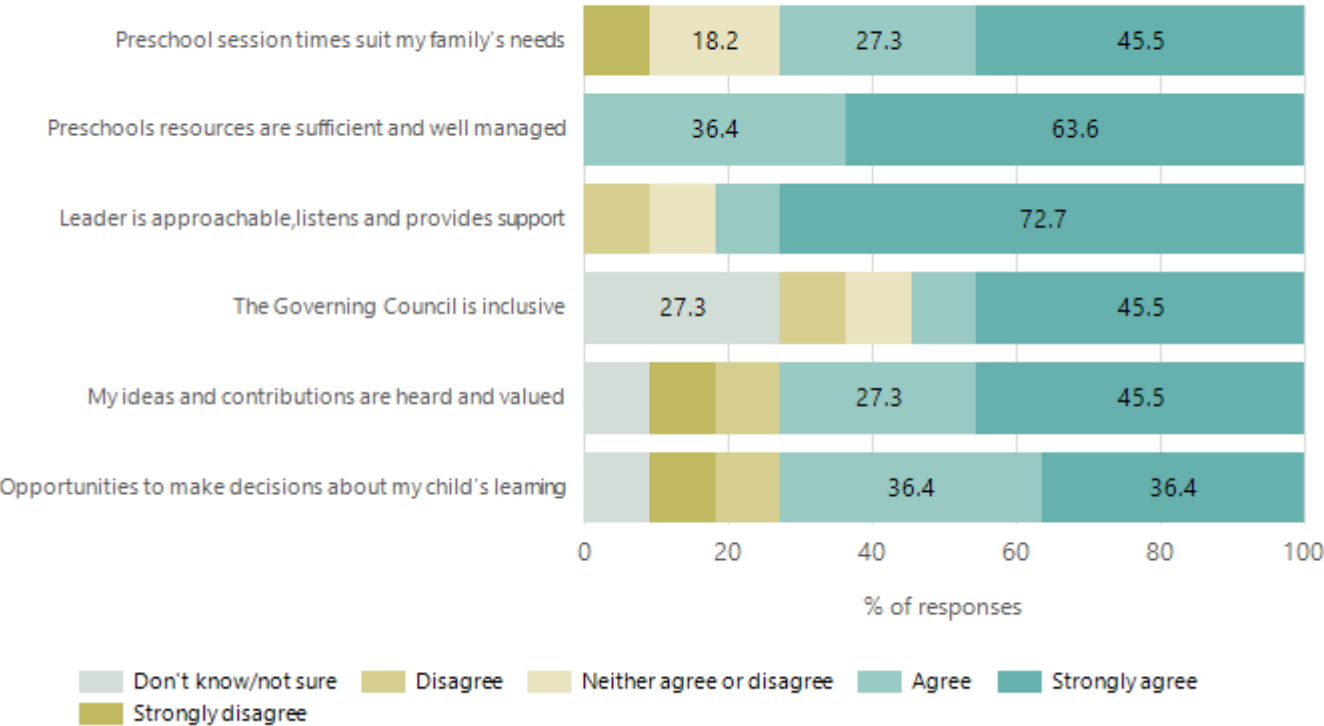
Attendance Comment

In South Australia, preschool attendance is not compulsory, but it is strongly encouraged. Preschool gives children the best opportunity to develop skills, which prepare them for school. These benefits include establishing positive routines and habits, friendships and connections as well as developing communication, problem-solving and creative skills. All children are entitled to access a preschool program over 4 terms the year before they start school.

In South Australia, all children and young people must be in school from 6 years to 16 years old. They must attend a government or non-government school full time. From age 16 to 17 however, young people must attend school or an approved learning program (such as an apprenticeship, traineeship, accredited course or university). Schools and parents must encourage and support students to come to school every day. Parents and caregivers must make sure their child is enrolled in a school, and attends school all day and everyday it is open, unless a child is sick or has an approved exemption. Teachers and leaders actively follow up when a student misses school, including recording all absences and non-attendance. All schools in South Australia have local attendance procedures governed under the Education and Children's Services Regulations 2020.

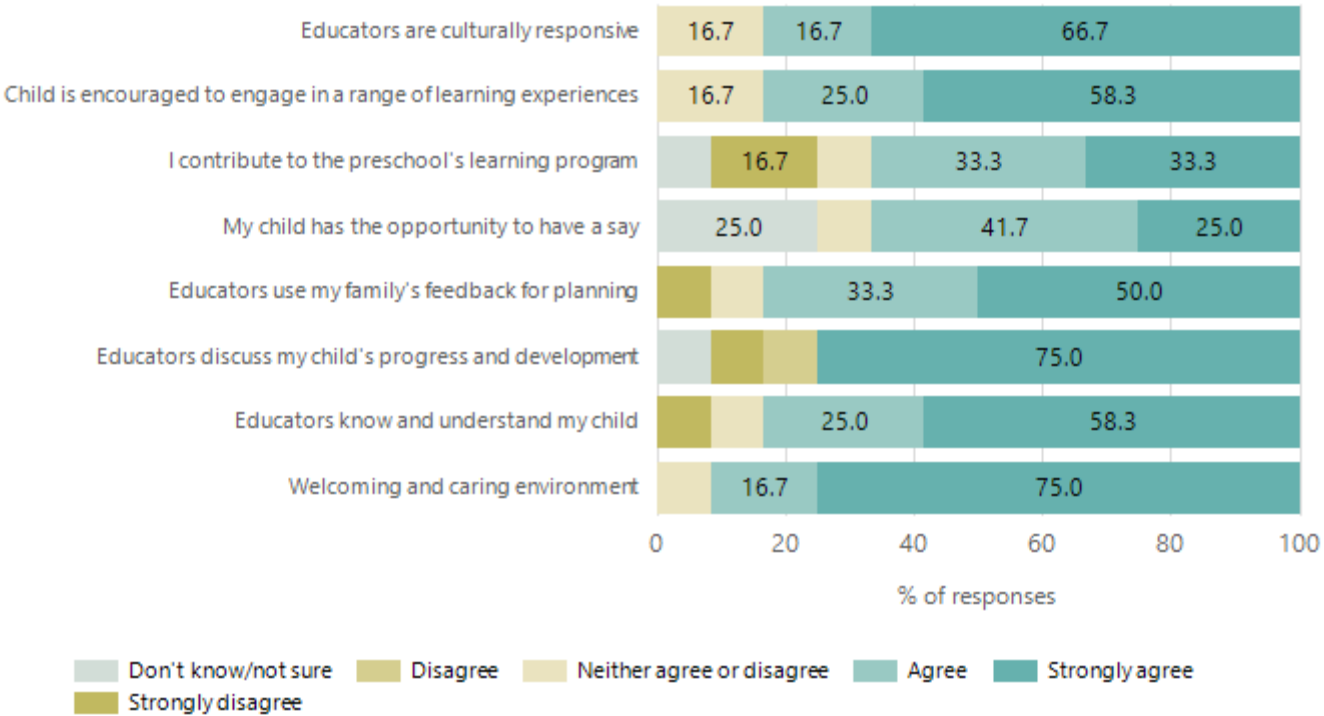
Preschool Family Opinion Survey

Governance, Leadership and Management



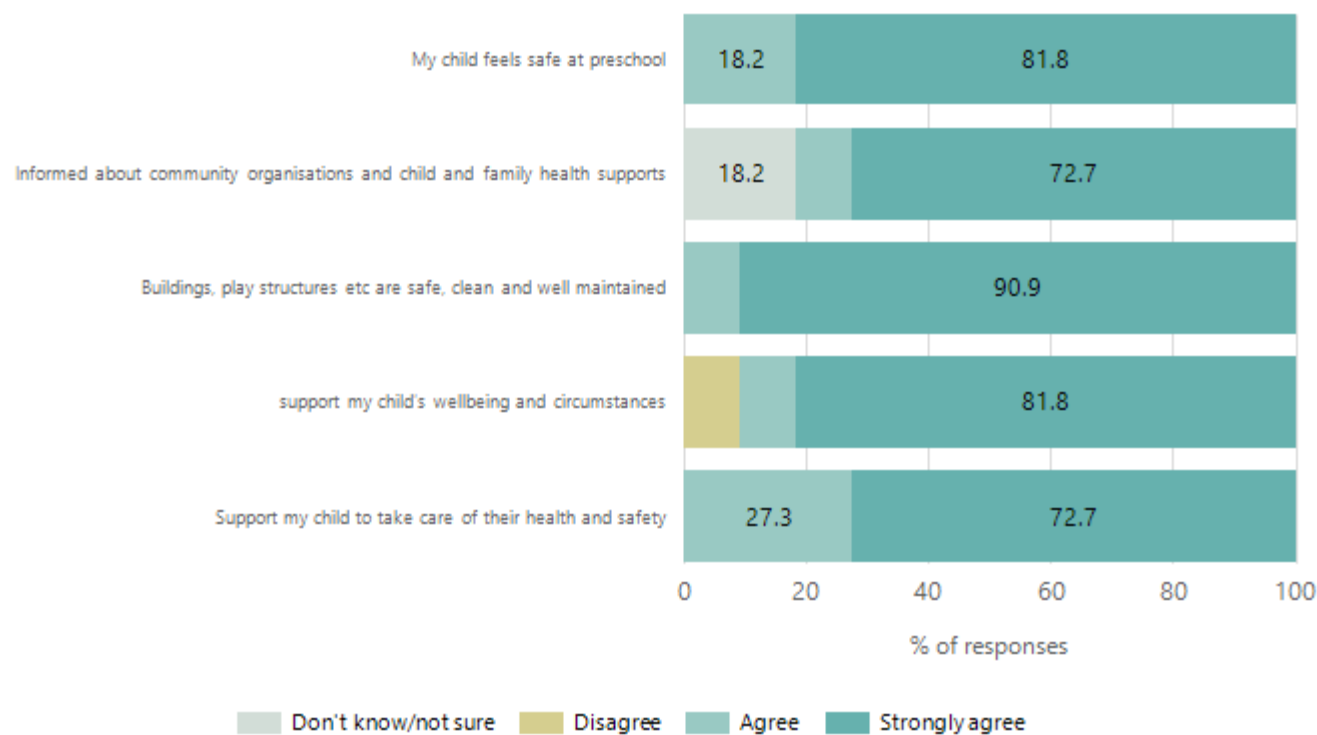
Data Source: 2024 Department for Education Preschool Family Opinions Survey, Term 3 2024.

Quality of Teaching and Learning



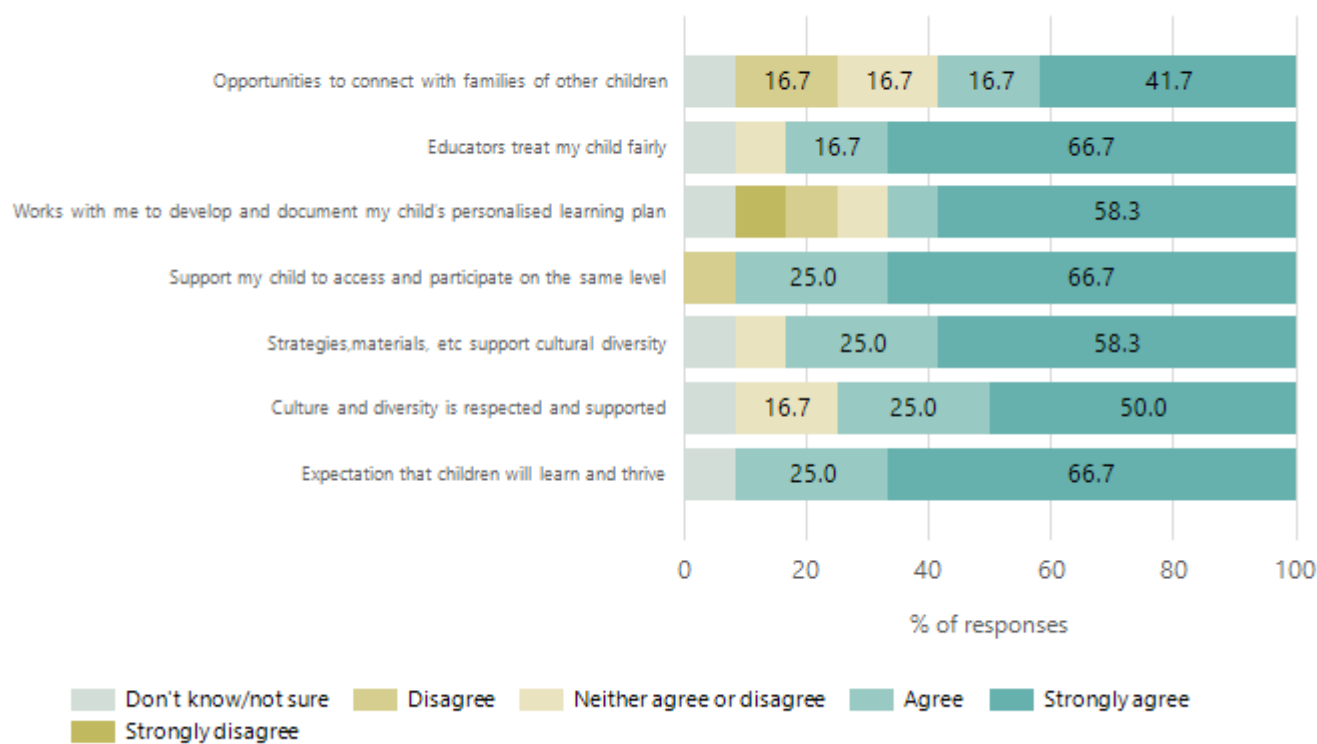
Data Source: 2024 Department for Education Preschool Family Opinions Survey, Term 3 2024.

Safety, Health and Wellbeing



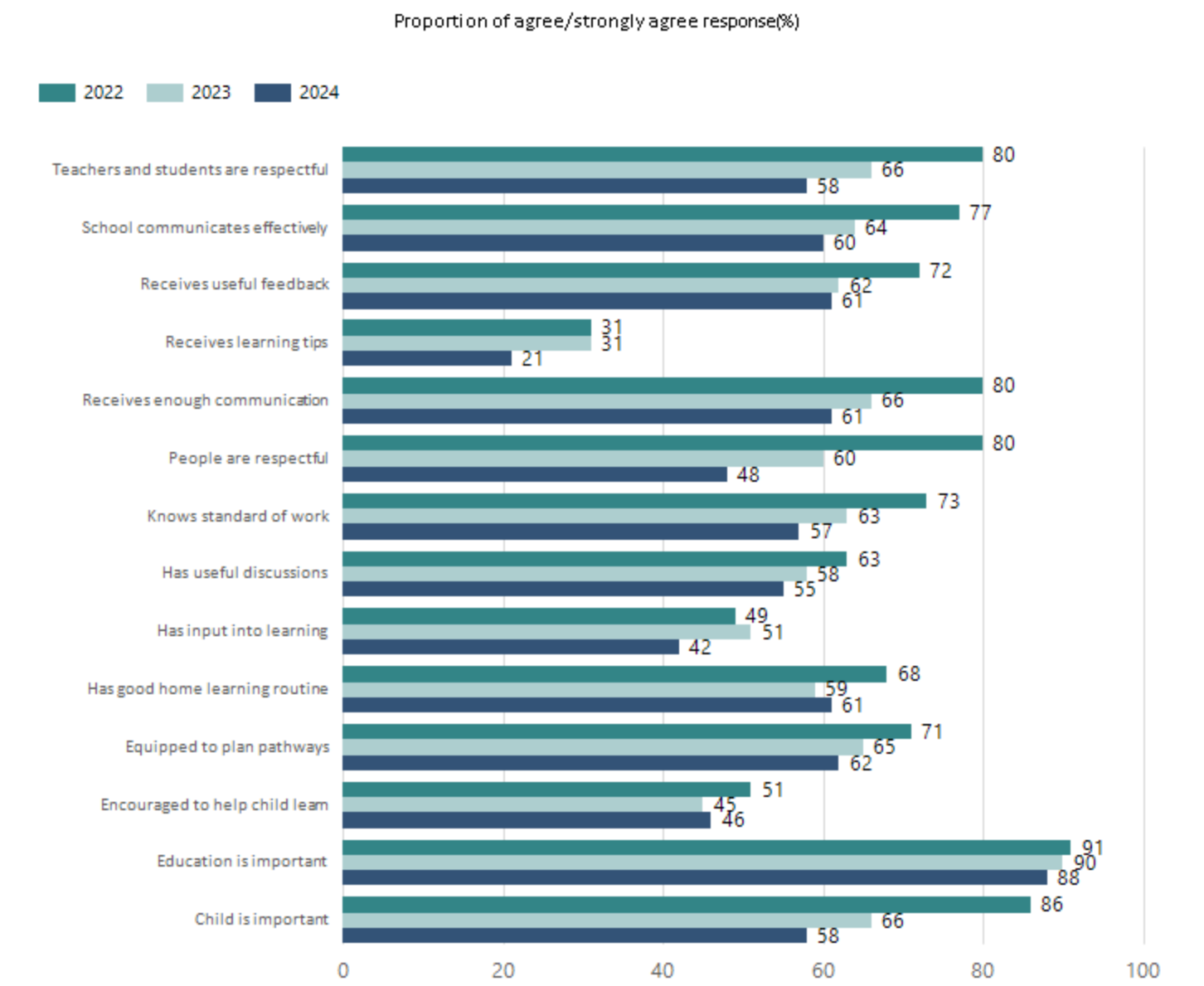
Data Source: 2024 Department for Education Preschool Family Opinions Survey, Term 3 2024.

Support and Inclusion



Data Source: 2024 Department for Education Preschool Family Opinions Survey, Term 3 2024.

School Parent Opinion Survey Results



Data Source: 2024 Department for Education Parent Opinions Survey, Term 3 2024.

Destination Schools

Feeder Schools (Site number - Name)	2022	2023	2024
1140 - Salisbury Park Primary School	4.2%		
1913 - Riverbanks College B-12	79.2%	79.5%	79.3%
9116 - St Paul Lutheran School	4.2%		
9999 - Unknown	12.5%	15.4%	11.3%

Note: The data is collected in term 3. It does not reflect actual schools enrolled in by existing preschool children. A blank cell indicates there was no data for students enrolled.

Data Source: Department for Education Destination Data Report, 2024.

Intended Destination

Leave Reason	Number	%
NG - ATTENDING NON-GOV SCHOOL IN SA	23	38.0%
OV - LEFT SA FOR OVERSEAS	3	5.0%
QL - LEFT SA FOR QLD	2	3.0%
TG - TRANSFERRED TO SA GOVERNMENT SCHOOL	29	48.0%
VI - LEFT SA FOR VIC	2	3.0%

Data Source: Department for Education Destination Data Report, 2024. Data extract term 3 2024. Data shows recorded destinations for students that left the school in the previous year. Data is uploaded by schools in term 3 and may not reflect final or total figures at time of report creation.

Highest Qualifications held by the teaching workforce and workforce composition

All teachers at this school are qualified and registered with the SA Teachers Registration Board.

Qualification Level	Number of Qualifications
Bachelor's degrees or Diplomas	66
Postgraduate Qualifications	38

Data Source: Data extracted from Mandatory Workforce Information Collections as on the last pay date of June 2024. As self-reported by staff in the system.

Please note: Data includes staff who are Actively employed and on extended paid leave. Please note only the highest qualification of the Teaching staff is reported. Excludes any number of other certifications earned.

Workforce composition including indigenous staff

	Teaching Staff		Non-Teaching Staff	
	Indigenous	Non-Indigenous	Indigenous	Non-Indigenous
Full-Time Equivalents	0.0	99.4	3.7	52.2
Persons	0.0	105.0	5.0	72.0

Data Source: Data extracted from Mandatory Workforce Information Collection as on the last pay date of June 2024.

Please note: Data includes staff who are actively employed and on extended paid leave. "Indigenous category" is self-reported by staff in the system.

Financial Statement

Funding Source	Amount
Grants: State	\$17,152,560.68
Grants: Commonwealth	\$5,000.00
Parent Contributions	\$515,209.14
Fund Raising	\$10,968.97
Other	\$188,100.87

Data Source: School supplied data.